

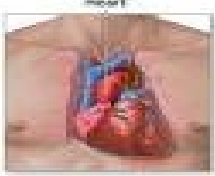
HEALTHY HEART CHECKS

Do you have a healthy heart? May is "Know your Heart" month at Hope Island and Homeworld Helensvale Medical Centres. In conjunction with National Heart Week we invite you to have a heart check health assessment; a new Medicare funded service.

How Much will it cost?

The Heart Check Health Assessments will usually be BULK BILLED. As a number of tests may need to be organized, some patients may require 2 visits.

Please



our

1806677

W

Everyone over 45 is eligible. Patients who identify as Aboriginal or Torres Strait Islander are eligible from 30.

Please attend if you are aged 45 – 74 and have any of the following risk factors; high cholesterol or you have not had your cholesterol recently assessed

high blood pressure or you have not recently had your blood pressure recently assessed

Smoking

Overweight or inactive

Diabetes or you have not recently had your Blood Glucose level checked

A family history of heart disease

What will happen at the heart clinic?

Firstly, your doctor will need to work out if you need blood tests. You will have your height, weight, blood pressure and blood glucose levels assessed.

An
is c
If y
the



of the heart. One of our doctors will check the results of this assessment.

If you are aged 45-49, you can attend the heart clinic as part of your 45-49 year old health check.

There are other check up services
Annual Diabetes Review
Annual Asthma Review
Annual Health Assessment
Annual Skin Check
Cancer screening

Please discuss your eligibility with your GP or one of our practice nurses

May/June 2019

Issue 80

Inside this issue:

Flu	2
Vaccination	
Australia's	2
Biggest	
Morning Tea	
Men's Health	3
National	3
Bowel	
Screening	
Program	

THE FIGHT FOR EVERY HEARTBEAT

Begins with you.



Do you have a healthy heart and do you know your numbers?

BP, cholesterol, height, weight, BMI, waist?

Your regular general practice is where the most complete and comprehensive record is held. Your general practice team works with you to assist in the overall co-ordination of your care and you become well known to the people looking after you.

Patterns can be identified and problems are less likely to be missed. We invite you to start thinking of Hope Island or Homeworld Helensvale Medical Centre as your medical home

Flu Vaccination— It's not too late

Although most people recover from the flu quickly, some people such as young children, older people and people with certain health conditions can be seriously affected by the flu, which can sometimes even result in death. Flu vaccination can be administered to anyone who wishes to reduce the likelihood of becoming ill with influenza. Annual vaccination is recommended for people who are at increased risk of flu related complications, including all people 65 years and older. The flu vaccine is FREE for many patients. Have your flu vax today!

If you are not eligible for free vaccine you can obtain the vaccine here at the Medical Centre at a cost of \$22.00, or you can have your prescription filled at the pharmacy of your choice. Last year was a particularly bad flu season and we encourage everyone who works with the public to strongly consider vaccination.

Vaccination against influenza is recommended every year, for anyone wanting to lower their chance of catching influenza. Influenza vaccination is particularly recommended for the following groups of people for whom influenza can have complications:

- those 65 years of age or older,
- All children aged 6 months—5 years

Aboriginal and Torres Strait

Although most people recover from the flu quickly, some people such as young children, older people and people with certain health conditions can be seriously affected by the flu, which can sometimes even result in death. Flu vaccination can be administered to anyone who wishes to reduce the likelihood of becoming ill with influenza. Annual vaccination is recommended for people who are at increased risk of flu related complications, including all people 65 years and older. The flu vaccine is FREE for many patients. Have your flu vax today!

If you are not eligible for free vaccine you can obtain the vaccine here at the Medical Centre at a cost of \$22.00, or you can have your prescription filled at the pharmacy of your choice. Last year was a particularly bad flu season and we encourage everyone who works with the public to strongly consider vaccination.

Vaccination against influenza is recommended every year, for anyone wanting to lower their chance of catching influenza. Influenza vaccination is particularly recommended for the following groups of people for whom influenza can have complications:

- those 65 years of age or older,
- All children aged 6 months—5 years

Aboriginal and Torres Strait

Although most people recover from the flu quickly, some people such as young children, older people and people with certain health conditions can be seriously affected by the flu, which can sometimes even result in death. Flu vaccination can be administered to anyone who wishes to reduce the likelihood of becoming ill with influenza. Annual vaccination is recommended for people who are at increased risk of flu related complications, including all people 65 years and older. The flu vaccine is FREE for many patients. Have your flu vax today!

If you are not eligible for free vaccine you can obtain the vaccine here at the Medical Centre at a cost of \$22.00, or you can have your prescription filled at the pharmacy of your choice. Last year was a particularly bad flu season and we encourage everyone who works with the public to strongly consider vaccination.

Vaccination against influenza is recommended every year, for anyone wanting to lower their chance of catching influenza. Influenza vaccination is particularly recommended for the following groups of people for whom influenza can have complications:

- those 65 years of age or older,
- All children aged 6 months—5 years

Aboriginal and Torres Strait

Australia's Biggest Morning Tea

Hope Island and Homeworth Helensvale Medical Centres will again be hosting Australia's biggest morning tea events. Australia's Biggest Morning Tea is an opportunity for friends, family or workmates to come together, share a cuppa and some delicious food, whilst helping those affected by cancer. All too often our practice teams are part of many patients' cancer journeys and this event is one way we like to help. The contributions made at Australia's biggest morning tea events fund cancer research, prevent and control cancer, and provide information and support for people affected by cancer. Proudly, we raised over \$1300 across the two practices last year, and we thank you all for your support. We've love to beat our efforts this year!

Together with the Cancer Council we're here to help and support those diagnosed as well as their families.

Please join us for our Bake Sale on Thursday 30 May and please buy raffle tickets—lots of hampers and prizes to be won.



nervous system that may affect

with HIV, cancer, chronic

nervous system that may affect

Men's Health

How often should men go to the doctor?

Forty-four per cent of doctors' patients are men and men visit their doctor less from adolescence onwards. There are no recommendations as to how often men should visit their GP and get a general health check as it depends on age, health and a whole range of other factors.

Your doctor will be able to advise how often or when your next appointment should be.

A Medicare item for a health check was introduced in 2006 to encourage men and women between the ages of 45 and 49 who are at risk of developing a chronic disease to visit their GP for a health check. The Australian Institute of Health and Welfare estimates that 94 per cent of males between the ages of 45 and 54 have at least one risk factor for cardiovascular disease. The bulk billed health check aims to help detect and prevent chronic disease, and encourage early intervention strategies.

Why is it important to know your doctor?

GPs are not just available for diagnosis and treatment of health issues; GPs are a complete health resource. There are many benefits to building a relationship with your GP. By regularly visiting the same GP, he/she will know your long-term medical history and have a better understanding of your health behaviours and needs. This then means that you can make the most of your consultation time when you are there. You are also more likely to make an appointment for the important follow-up consultation. Developing trusting relationships can encourage men to visit the doctor, speak about their health, make positive changes to health behaviour, and make repeat visits for further health care.

If you haven't been to the doctor for a long time, or are new to the area, booking a long consultation for the first appointment will ensure that the doctor has time to take a full medical history.

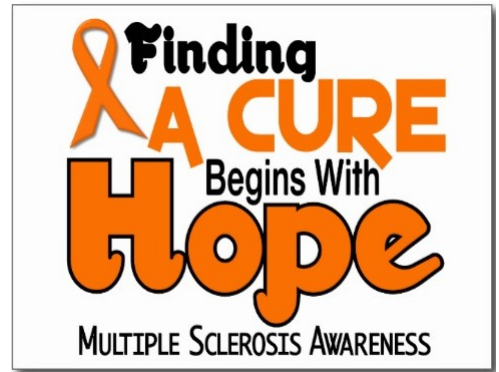
And if your doctor can't help you directly with your health concern, he/she can refer you to someone else locally.

Questions for men over the age of 40:

- Am I at risk of developing any diseases and do I need tests?
- Is my family history important?
- What about my prostate – should I get it checked and is a blood test enough?
- Is my weight a problem?

What about my cholesterol?

If I'm okay—why don't I feel so good?



Your doctor will be able to advise how often or when your next



disease to visit their GP for a health check. The Australian Institute of Health and Welfare estimates that 94 per cent of males between the ages of 45 and 54 have at least one risk factor for cardiovascular disease. The bulk billed health check aims to help detect and prevent chronic disease, and encourage early intervention strategies.

Why is it important to know your doctor?

Why is it important to know your doctor?



A united Australia which respects this land of ours; values the Aboriginal and Torres Strait Islander heritage; and provides justice and equity for all.



consultation. Hope Island and Homeworld Helensvale Men's Health Services are proud to help participants engage to visit the program, speak about their health, make positive changes to health behaviour, and make repeat visits for further health care.

If you haven't been to the doctor for a long time, or are new to the area, booking a long consultation for the first appointment will ensure that the doctor has time to take a full medical history.

And if your doctor can't help you directly with your health concern



NATIONAL BOWELCANCER SCREENING PROGRAM

Bowel cancer is Australia's second biggest cancer killer affecting 1 in 12 Australians in their lifetime. So chances are that you, or someone you know, will be affected in some way by the disease. Despite being one of the most preventable cancers, bowel cancer is something people don't like to talk about; it's a conversation killer. Our aim is to stop people dying of embarrassment. **The reality** – bowel cancer doesn't discriminate; it affects both men and women. **The risk** – bowel cancer risk increases with age or a family history. **The hope** – if caught in time, 90% of bowel cancer cases can be treated successfully.

If you're aged 50-74 and eligible you'll be sent a free bowel cancer screening kit. Around 80 Australians die of bowel cancer every week, but if detected early, up to 90% of cases can be successfully treated. Everything you need to know about the National Bowel Cancer Screening Program is here. It's a gift that could save your life.

bleeding from the back passage or any sign of blood after a bowel motion
a change in usual bowel habit, such as straining (constipation) to go to the toilet or loose motions (diarrhoea)
abdominal pain or bloating
weight loss for no obvious reason, or loss of appetite
symptoms of anaemia – including unexplained tiredness, weakness or breathlessness.

Who is at risk?

Everyone is at risk of developing bowel cancer, however the risk greatly increases with age, particularly from age 50. You are also at greater risk if you have:

- a previous history of polyps in the bowel
- a previous history of bowel cancer
- chronic inflammatory bowel disease (eg. Crohn's disease)
- a strong family history of bowel cancer
- increased insulin levels or type 2 diabetes.

If you are at increased risk, discuss surveillance options with your doctor .



A heartfelt thanks for all you do

National Nurses week

Something people don't like to talk about, it's a conversation killer. Our aim is to

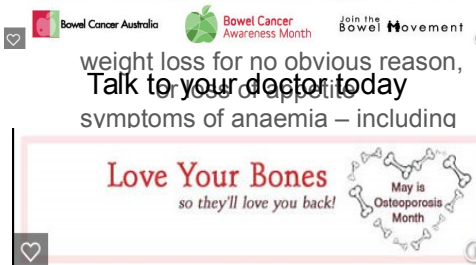
World Continence Week June 22-28

Tell someone who cares

Phone **1800 33 00 66**

National Continence Helpline | continence.org.au

history. **The hope** – if caught in time,



A ten second test that could save your sight.

May 25-31 **Macular Degeneration Awareness Week.**

Ask your Doctor Today

This Amstar Grid is used for the early detection of macular degeneration.

1. If you normally wear glasses to read, put them on.
2. Look at the grid, holding the page at your normal reading distance.
3. Cover one eye and look at the dot in the centre.
4. Without moving your eyes off the dot, see whether any of the lines in the grid are wavy, missing or blurred. If this happens, please see your optometrist or ophthalmologist immediately.
5. Repeat with the other eye.